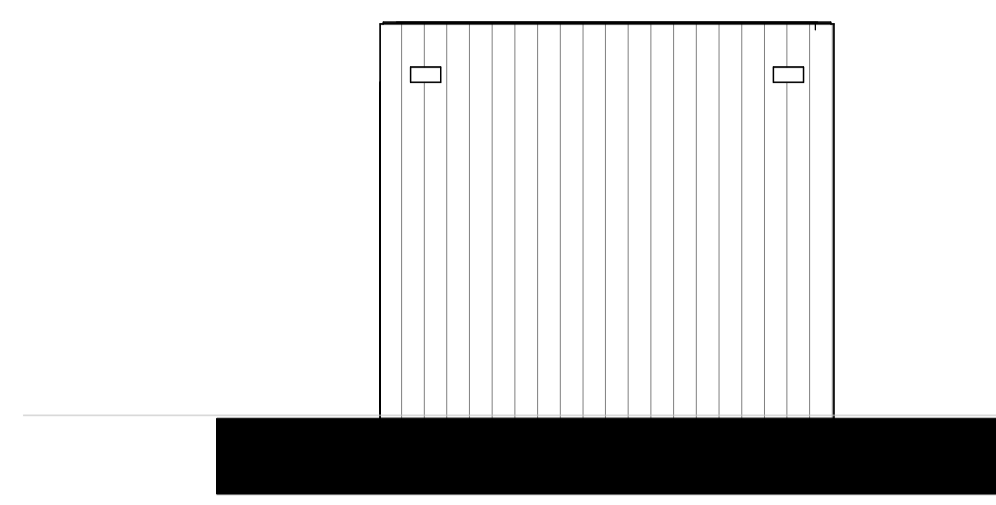
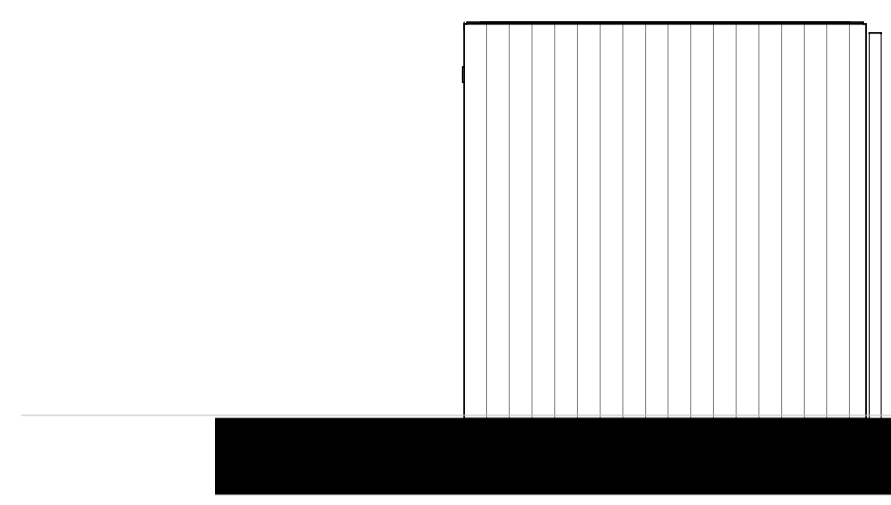


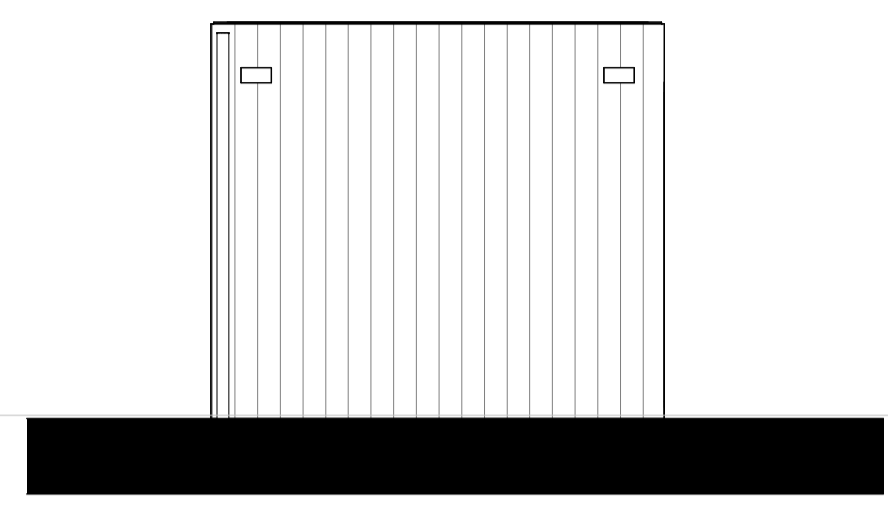
doorsnede



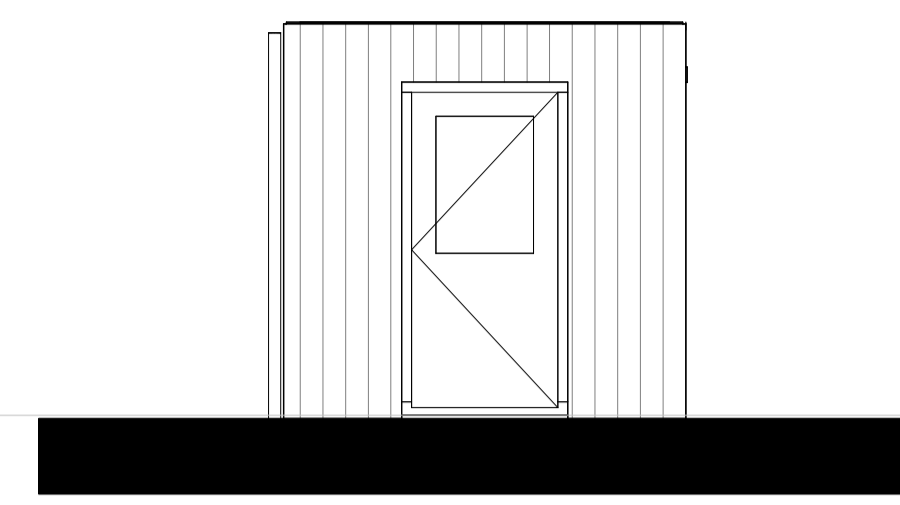
voorgevel



rechtergevel



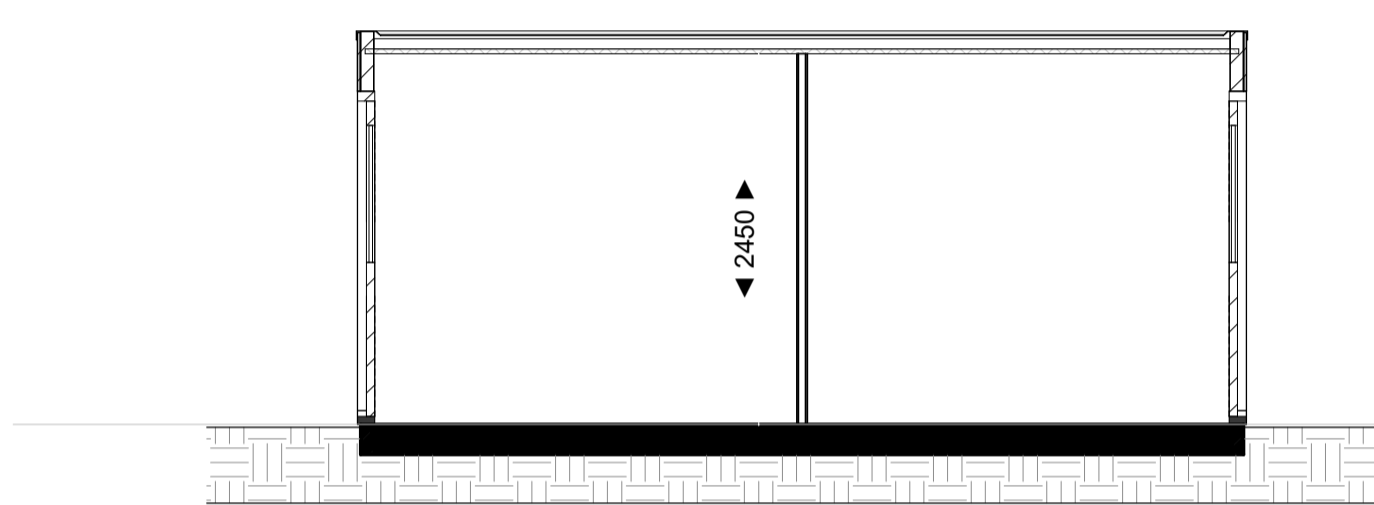
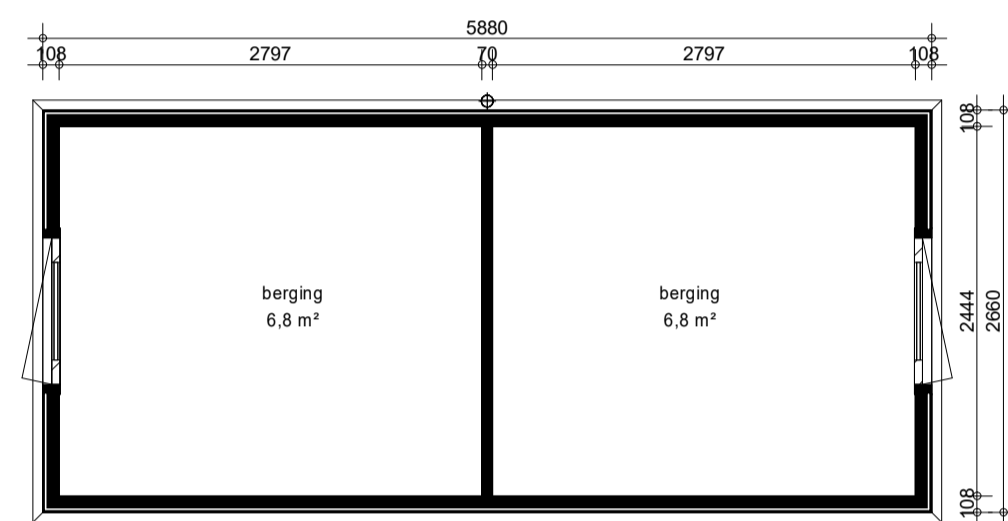
achtergevel



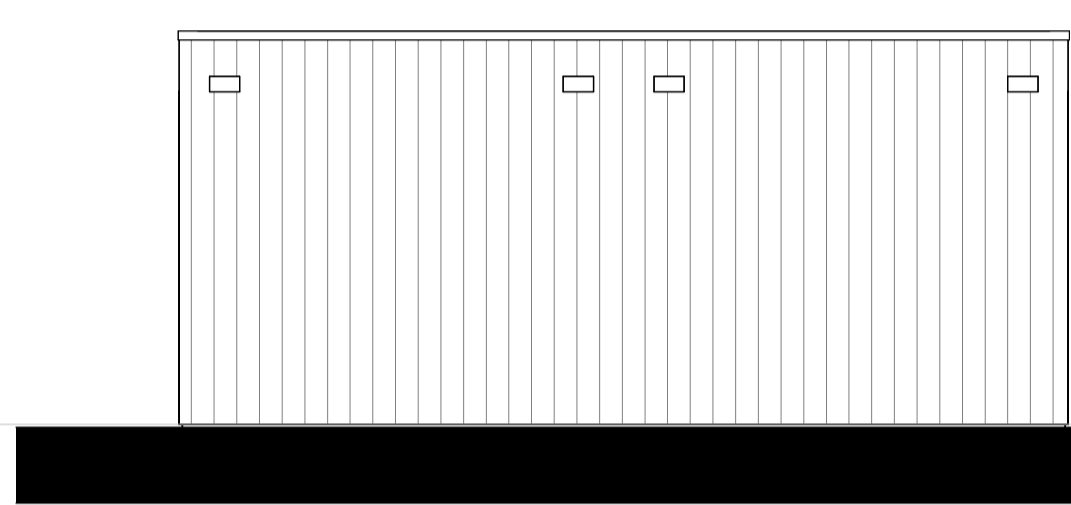
linkergevel

plattegrond

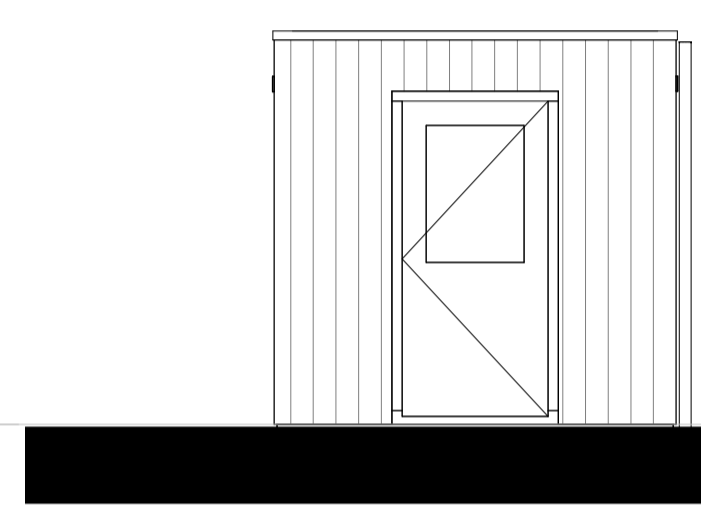
berging 3m x 3m, vrijstaand ■



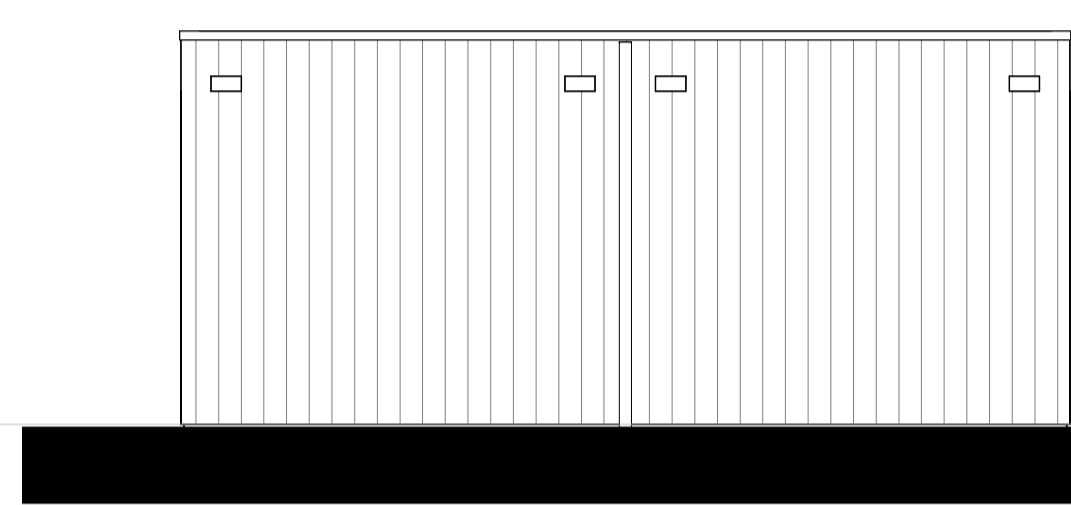
doorsnede



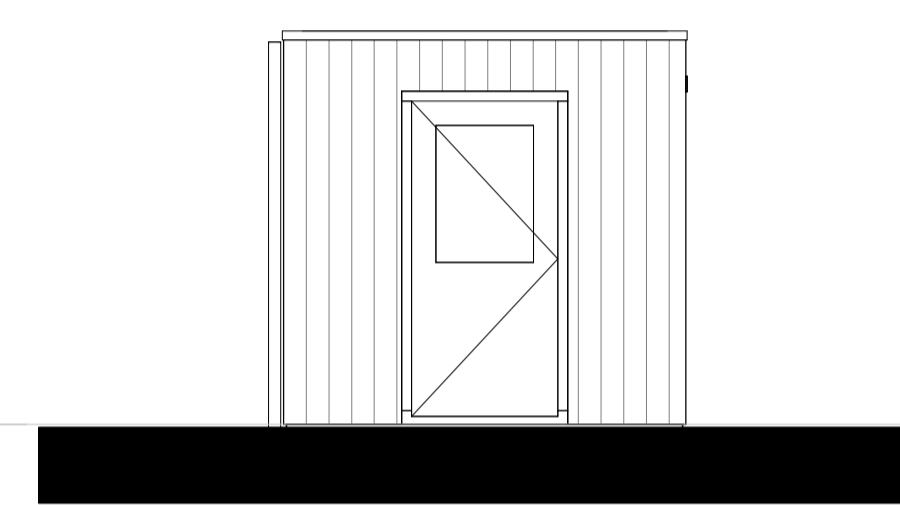
voorgevel



rechtergevel



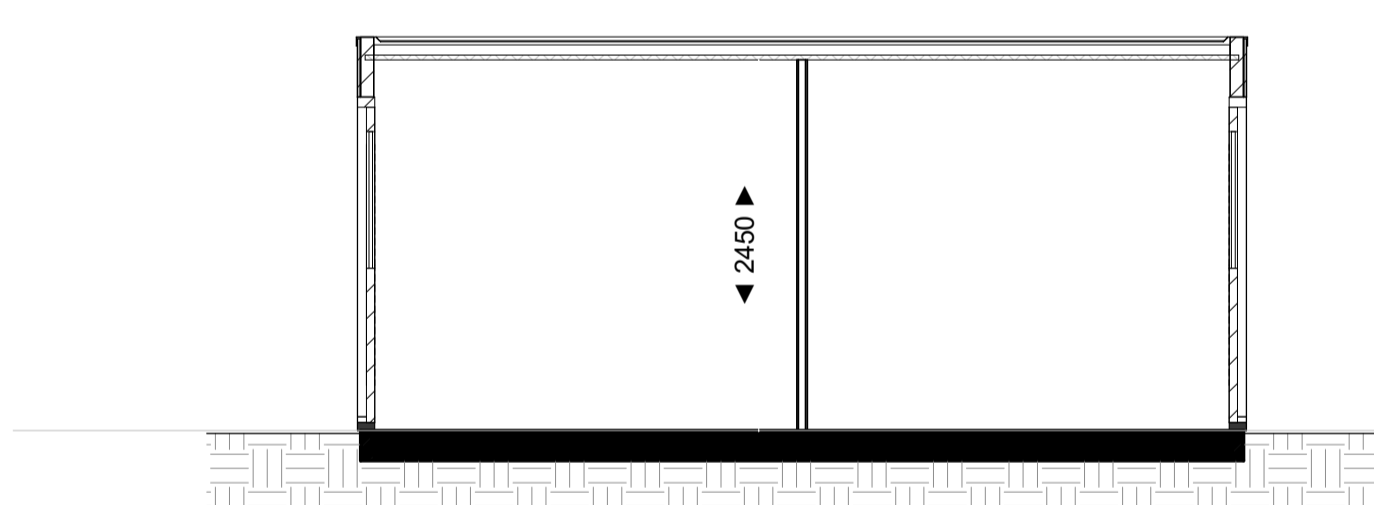
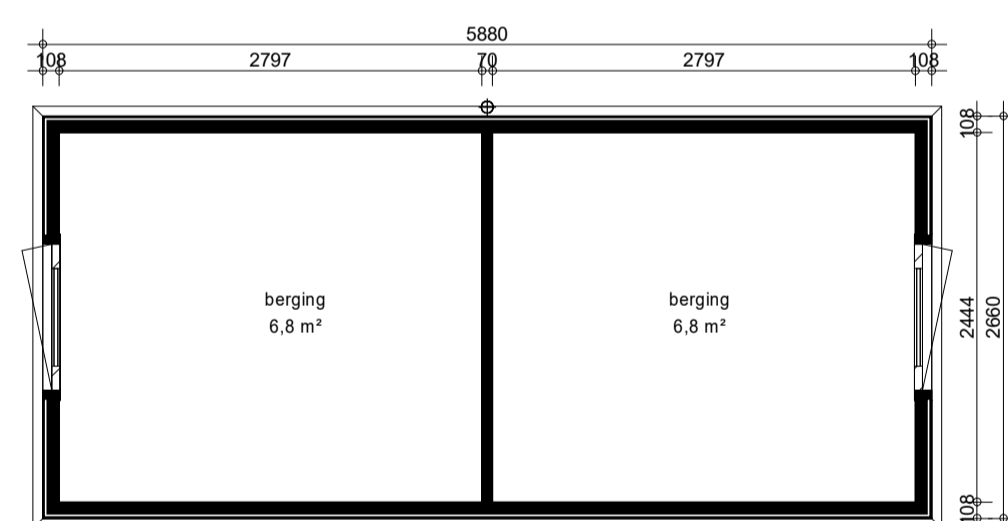
achtergevel



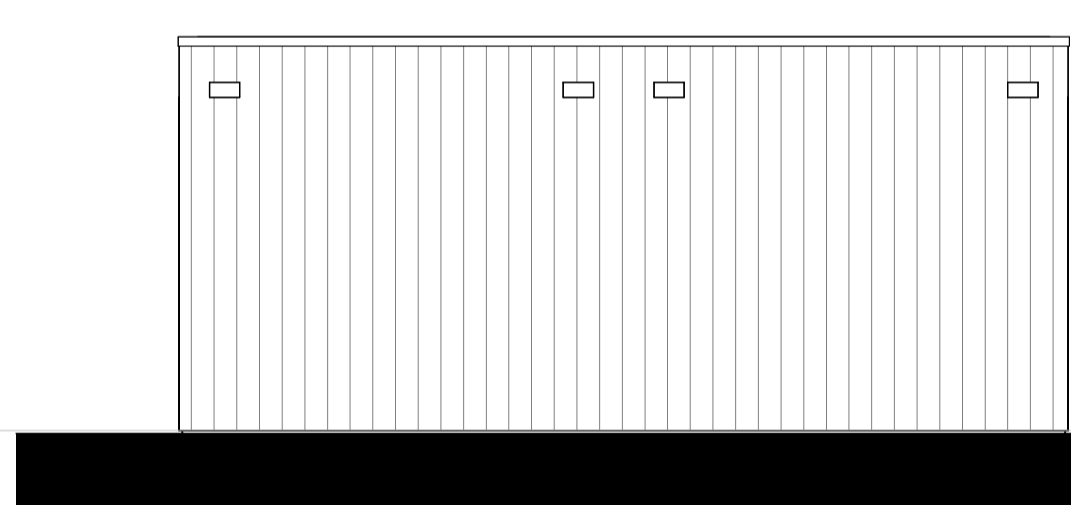
linkergevel

plattegrond

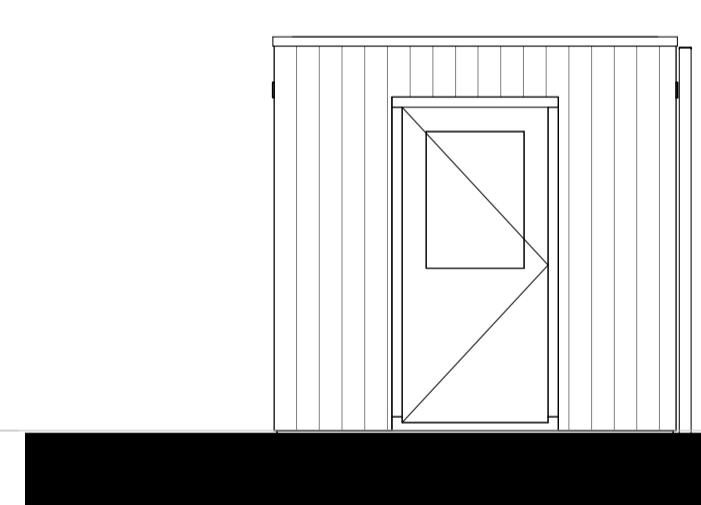
berging 6m x 3m, gecombineerd (2st) ■



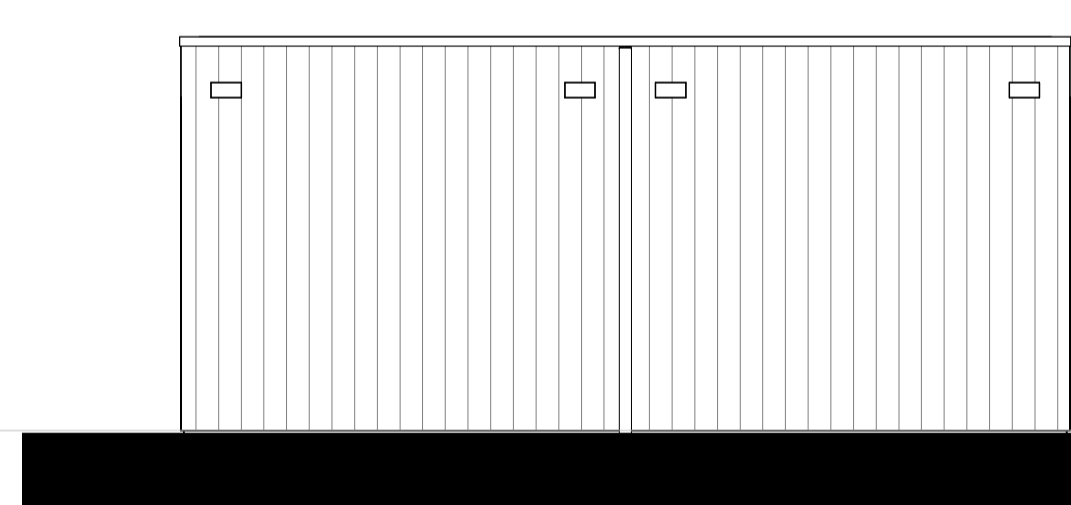
doorsnede



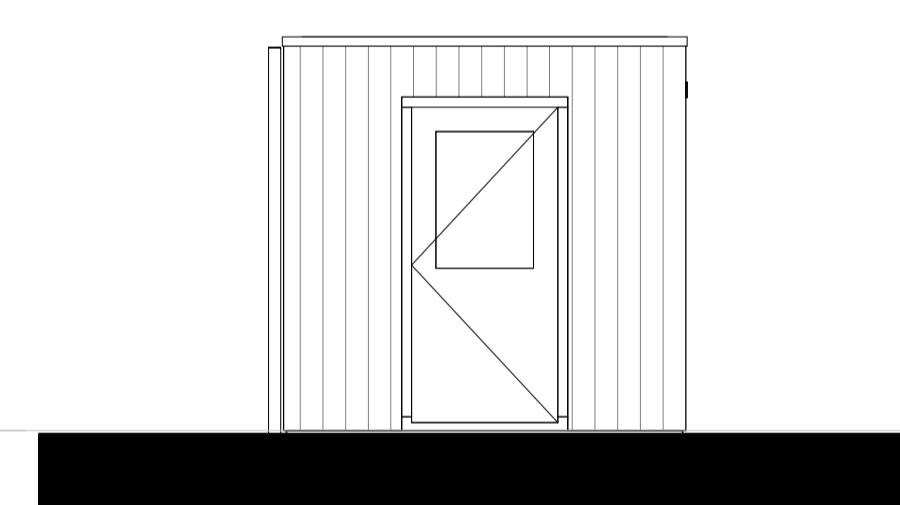
voorgevel



rechtergevel



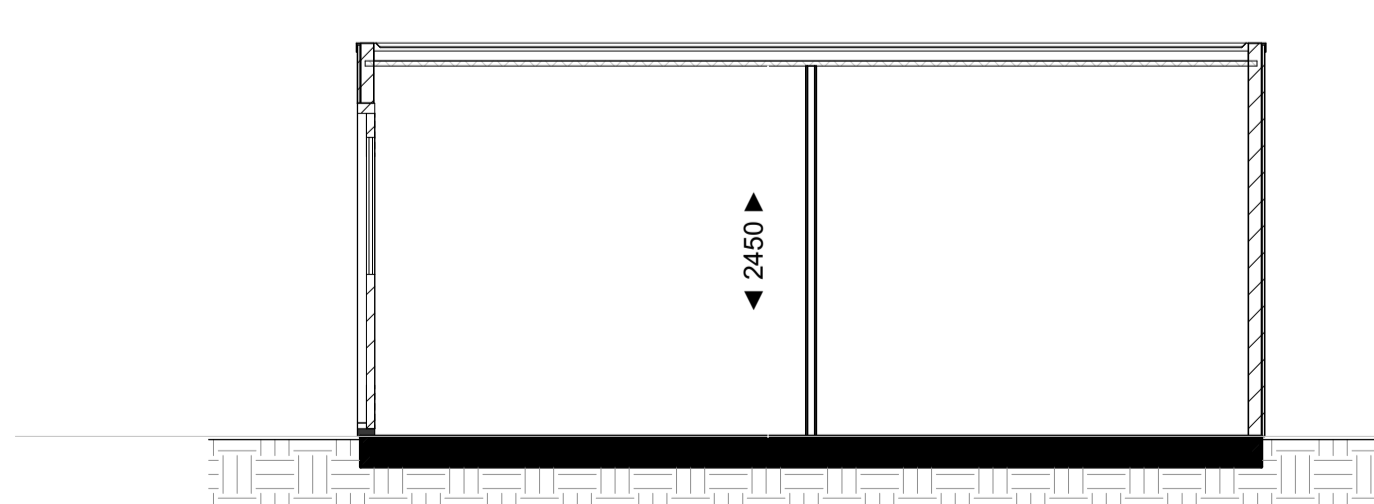
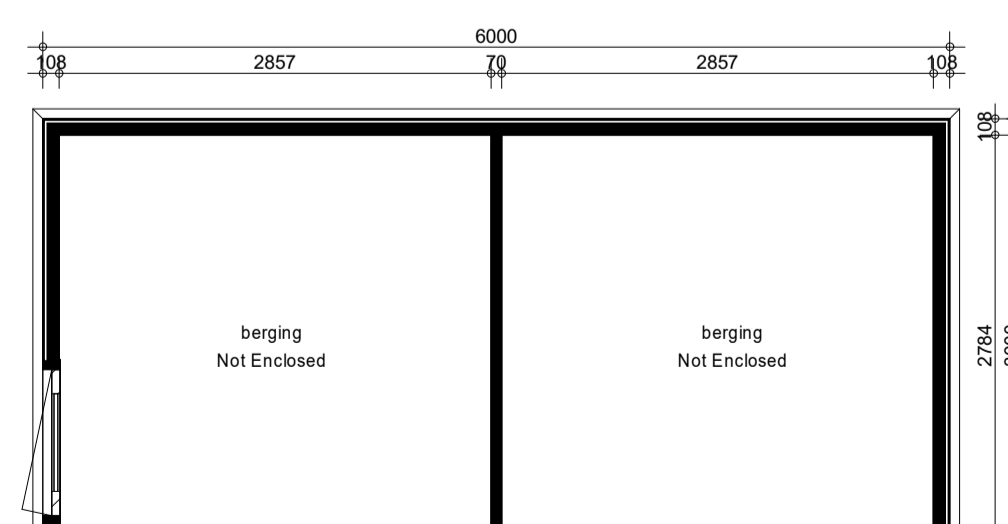
achtergevel



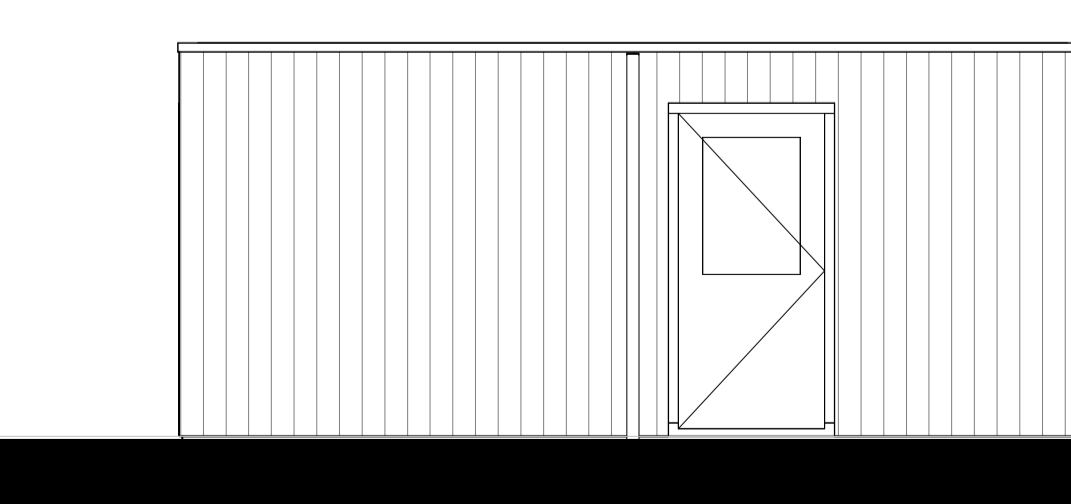
linkergevel

plattegrond

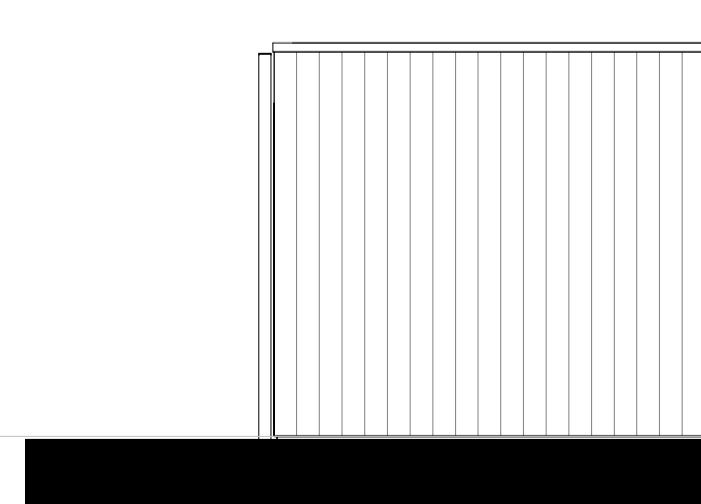
berging 5,88m x 2,66m, gecombineerd (2st) ■



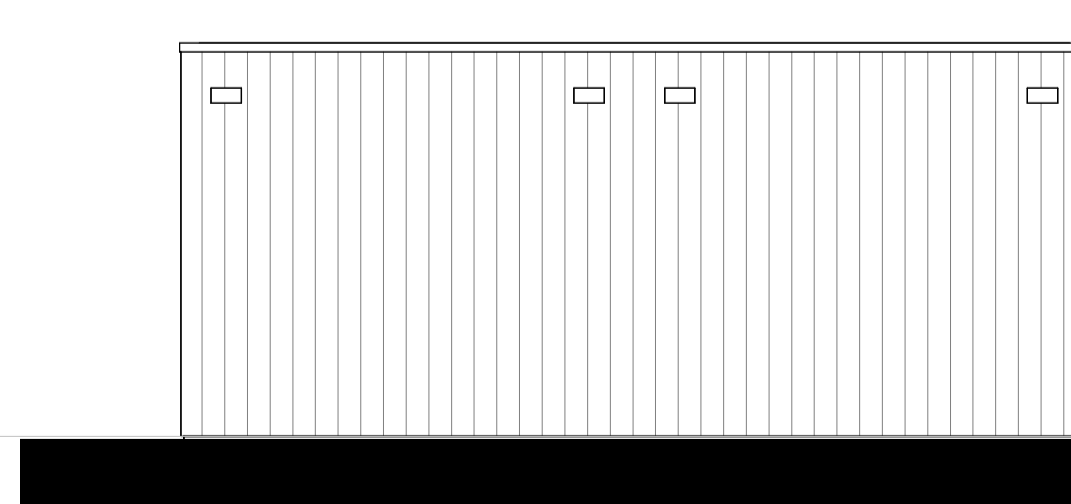
doorsnede



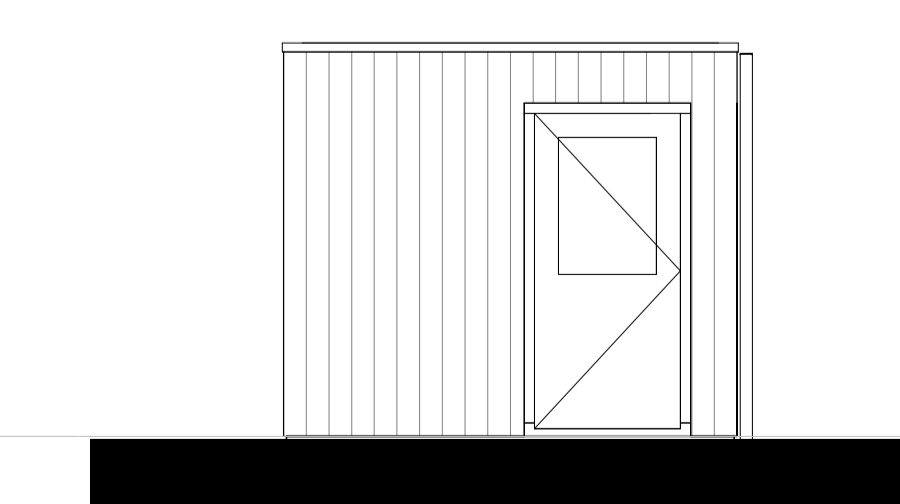
voorgevel



rechtergevel



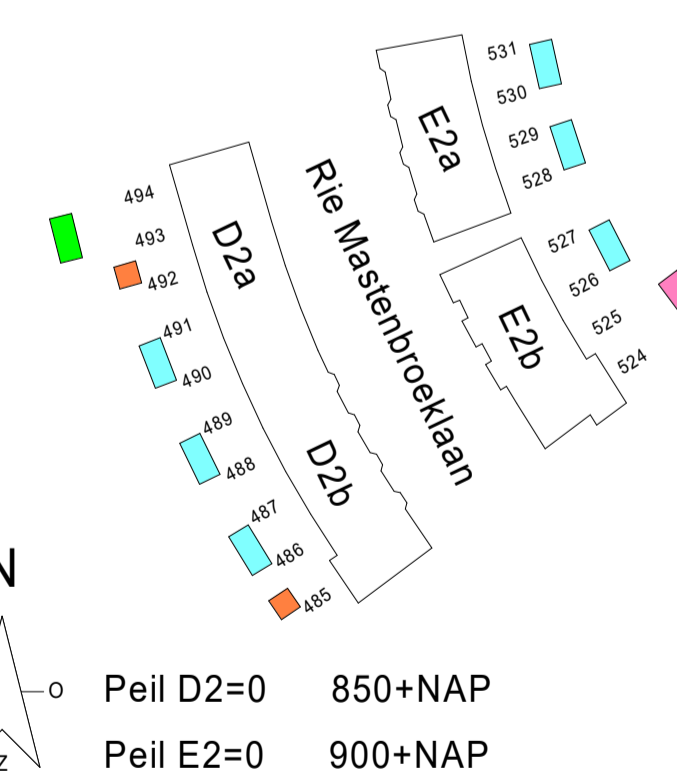
achtergevel



linkergevel

plattegrond

berging 6m x 3m, gecombineerd (2st) ■



Voor elektra zie bouwnummer verkooptekening  
 Kleuren en materialen zijn indicatief, materiaal en afwerking  
 cf. technische omschrijving en technische uitwerking.  
 E&W installaties conform individuele KAO tekeningen, zie  
 tevens de technische omschrijving.

**DEFINITIEF**

project: **NIEUW KRALINGEN**

betreft: bergingstekeningen

fase: KAO      datum: 01-11-2024      schaal: 1:50      formaat: A1++

projectnummer: 12718      tekeningnummer: B9.D2E2.600